

W Type of Medium-High Pressure Oil-Free Air Compressor

- **LOW SPEED:** STARTING FROM 355 TO 460 RPM REDUCE WEAR.
- **LONG STROKE:** 10 TO 30% MORE THAN SIMILAR INDUSTRIES.
- **LOW PISTON LOAD:** SMALLER PISTON DIAMETER, REDUCE LOAD ON COMPONENTS.
- **LOW DISCHARGE TEMPERATURE:** OPERATE TEMPERATURE WITHIN 90°C-130°C IMPROVED RELIABILITY.
- **IMPROVED COMPRESSION:** ADDITIONAL 1 TO 3 RING TO REDUCE COMPRESSION LEAKAGE.
- **LOW VIBRATION:** PRECISION BALANCE INERTIA FORCE AND TORQUE TO ACHIEVED DYNAMIC BALANCE.
- **HIGH VOLUMATIC EFFICIENCY:** ACHIEVED ISOBARIC CONDITION WITH EQUAL PRESSURE RATIO ON EACH STAGE.
- **COMPRESSION DESIGN:** 3-STAGES WITH DOUBLE ACTING ON STAGE ONE AND COMBINATION SINGLE ACTING ON STAGE TWO & THREE.
- **HIGH EFFICIENT COOLER:** PROVIDING COMPRESSION CYCLE CLOSED TO ISOTHERMAL CONDITION, REDUCES ENERGY LOSS.

TECHNICAL PARAMETERS:

Model	Delivery m³/min	WP Bar	Power Kw	Speed r.p.m	Dimension (L×W×H)mm	Weight kg
VW-5/40	5	4.0	55	600	2330×1700×1900	2500
VW-9/40	9	4.0	110	600	2530×1900×1900	3200



V Type of Medium-High Pressure Oil-Free Air Compressor

- WEAR RESISTANT CYLINDER SLEEVE, HARDEN AND FINISHED FOR RELIABILITY.
- HEAVY DUTY PISTON RINGS, MATERIAL COMPOSITE PTFE WITH COPPER AND CARBON.
- PISTON ROD SENSOR, MONITORING PISTON RINGS CONDITION.
- WATER COOLED PACKING BOX, IMPROVED COOLING AND PROLONG PACKING SEAL.
- HARD CHROME, POLISHED PISTON ROD REDUCE FRICTION AND REDUCE PACKING WEAR.
- LOW PISTON SPEED REDUCE PISTON RINGS WEAR.
- SILENCE COMPRESSION VALVES WITH NON-RUPTURE PEEK VALVE SEAT.
- FORCE LUBRICATION MAIN BEARING IMPROVE BEARING SERVICE LIFE.
- DUAL OIL INJECTION ELIMINATE CONNECTING-ROD OIL CHANNEL, IMPROVE ROD STRENGTH.
- RELIABLE ALUMINUM-MAGNESIUM ALLOY CRANKSHAFT BUSH BEARING.
- DISTANT-PIECE DESIGN WITH OIL-SCAPER RINGS TO ENSURE 100% OIL-FREE AIR QUALITY.
- AIR RECOVERY SYSTEM.
- EASY ACCESS FOR MAINTENANCE, REDUCE SERVICE DOWNTIME.
- STAINLESS STEEL PIPES AND TUBING ELIMINATE RUST FOR RELIABLE OPERATION.

TECHNICAL PARAMETERS:

Model	Delivery m³/min	WP Bar	Power Kw	Speed r.p.m	Dimension (L×W×H)mm	Weight kg
VW-3/40	3	4.0	37	600	2330×1700×1600	2100
VW-6/40	6	4.0	75	600	2330×1700×1600	2600



Countrywide branch office and parts warehouses to provided quality and timely service. Ofure service engineer available 24 hour 7 day on worldwide technical service support.

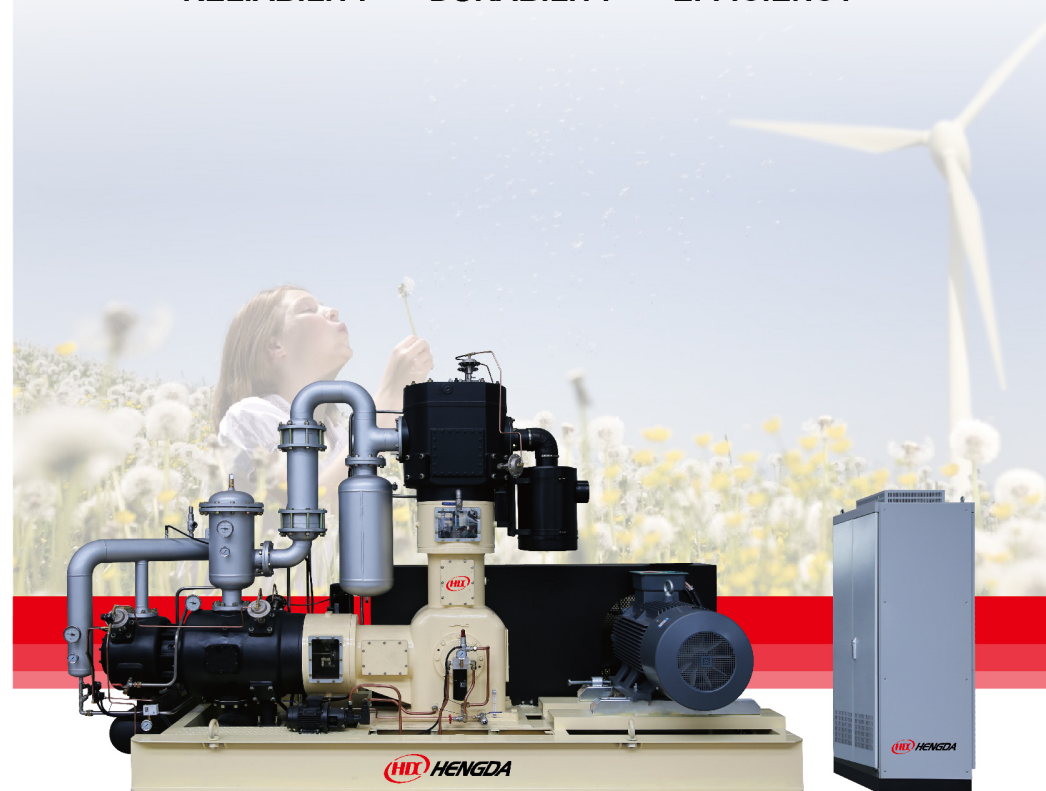
Worldwide 40 Bar PET oil-free air compressor

- ✓ Provide 24 hour on call service.
- ✓ Complete range of parts inventory.
- ✓ Scheduled maintenance program.
- ✓ On-site training and commissioning.
- ✓ Turnkey installation service.



OIL-FREE PET 40 BAR AIR COMPRESSOR

- RELIABILITY • DURABILITY • EFFICIENCY •



Nanjing Hengda Co., Ltd.

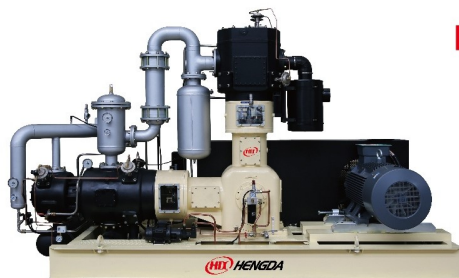
BENEFITS & FEATURES

- ✓ **Options configuration.**
 - Wide range of pet compressors or Low pressure & booster combination
- ✓ **Highest cost performance.**
 - Low installation & maintenance cost Low energy costs
- ✓ **Worldwide service network.**
- ✓ **Global solutions:** Variable speed intelligent software
- ✓ **Worldwide technical support**
 - Global operating conditions
 - Shared spare parts & technical services
- ✓ **Extended warranty program**



CONTROL CABINET

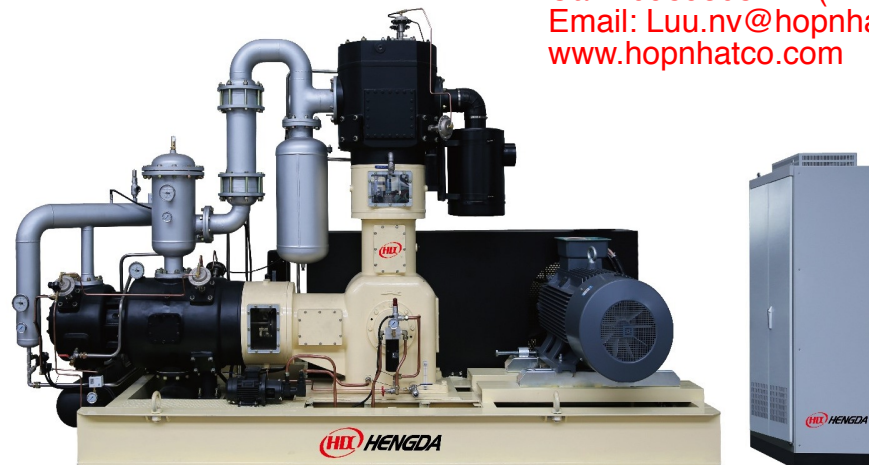
- ✓ **Features**
 - Built-in SIEMENS HMI touch panel display & SIEMENS PLC to control and monitor operating status
- ✓ **Advantage**
 - User friendly monitoring system, integrated schedule maintenance, inter-stage pressure & temperature, cooling water and lubricating pressure, alarm and shutdown protection.
- ✓ **IOT network (option)**
- ✓ **Variable Frequency Drive (option)**



COMPRESSOR PACKAGE

- ✓ **Features**
 - Complete skit mounted.
 - Reliable cooling system with stainless steel tube & fittings.
 - Zero loss condensate drain.
 - Independent oil pump for prelubrication.
- ✓ **Advantage**
 - Simple installation.
 - Easy access ease of maintenance.
 - Minimized leakage & losses.

MODEL:HLW-10/40



Call : 0989508177 (Mr Luru)
Email: Luu.nv@hopnhatco.com
www.hopnhatco.com

TECHNICAL PARAMETERS:

Model	Delivery m ³ /min	WP Bar	Power Kw	Speed r.p.m	Dimension (L×W×H)mm	Weight kg
HLW-8.5/40	8.5	4.0	90	450	4050×1750×2380	5500
HLW-10/40	10	4.0	110	500	4050×1750×2380	5800
HLW-12/40	12	4.0	132	580	4050×1750×2380	6000
HLW-16/40	16	4.0	160	390	4650×2200×2780	7400
HLW-18/40	18	4.0	185	440	4650×2200×2780	7600
HLW-20/40	20	4.0	200	470	4650×2200×2780	7800
HLW-22/40	22	4.0	220	500	4650×2200×2780	8000
HLW-25/40	25	4.0	250	390	4950×2690×2980	8500
HLW-28/40	28	4.0	280	440	4950×2690×2980	8800
HLW-30/40	30	4.0	315	470	4950×2690×2980	9000